



STALWART INTERNATIONAL PRIVATE LIMITED

Head Office:

101 Status, 12 Jaihind Society, N. S. Road No. 12,
JVPD Scheme, Vile Parle West, Mumbai - 400049

Factory:

Plot No. 8, 9 & 12, Agarwal Udyog Nagar,
Near MSED Section Office, Sativali Roadt
Waliv, VASA East, (District Palghar) - 401208

+91 703 011 5566

sales@stalwartint.com

www.stalwartint.com



STALWART

INTERNATIONAL

+ **PREFERRED PHARMA PARTNER**

A LEGACY OF EXPERIENCE
44 Years of Equipment Manufacturing



“

When we cater to industries to the best of our ability, there is a deep sense of fulfillment. I believe that industries are the backbone of any economy.

- Kishor Ganatra

”

“

These are exciting times. When you work keeping the best interests of client's at heart, it takes very little time for the world to recognize and find you.

- Ravi Ganatra

”

From the Director's Desk



Ravi Ganatra

Kishor Ganatra

“

What we save, saves us. Stalwart is committed to protect the environment and encourages sustainable practices.

”





Stalwart International

Stalwart has been swiftly emerging in the SME sector of India's rapidly-modernising engineering industry.

It has a long and rich legacy — being under the experienced leadership of Mr. Kishor Ganatra, who founded and steered **Shree Krishna Fabricators Pvt. Ltd. (SK-fab)**

SK-fab, as it is better known, is one of the leading companies manufacturing a range of plant and equipment for chemical and pharmaceutical industries, For more than four decades. it has successfully delivered high performing engineered equipment and services to clients across Indian and overseas locations.

Stalwart International Pvt. Ltd. has focused on keeping manufacturing facilities in-house, to have better control over the quality of process equipment, on-time delivery of equipment and handing over the plant.

REIMAGINING LEGACY



Since **1979**

5000+ Installations

Turnkey projects

Specialist in manufacturing **process equipment**

our Journey

High level of technical expertise and skills

We believe that our job does not end with the installation of machines; it only begins! As a long-term partner to all our clients, Stalwart's experienced team provides sustained support and services, developing cost-effective, high-quality and proactive solutions for all your needs.

2023

Stalwart opens doors for **alliances** and **collaborations** worldwide

2021

Expanded under-crane high-roof capacity to **5000 sq.mtr.** in Mumbai.

2015

Executed 1st single order worth **USD 2 million.**

2003

Designed & manufactured **Heat Exchangers** operating at **60 bar** and **280°C**, and tested at **90 bar.**

1996

Executed a single order of **64** mixing vessels from **Goodlass Nerolac Paints Ltd.**

1992

First **direct export order** executed.

1982

First **Merchant export order** executed.

1979

Established.

Infrastructure



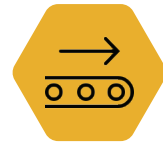
Factory

Fabrication area - 52,540 sq. ft.
Tonnage handled - 60 tonnes



Inventory

Stainless Steel Plates, Round Bars and Tubes are readily available in stock, ensuring quick commencement of operations.



Forming

Joint free limpet (half pipe) coil forming, pipe coil forming, dished end and cone forming by pressing and spinning process, Shell plate pre-punching and rolling, 'U' tube bending and tube corrugation.



Machining

Well Equipped machine shop consisting of various Lathe, Radial Drill, Milling, Shaping and Balancing Machine. We do Dynamic balancing for High RPM Agitator and Centrifuge Basket.



In-House Testing Facilities

- ▶ Liquid Penetrant Test
- ▶ Calibrated Gauges & Measuring Instruments
- ▶ Hydro pressure testing pressure pump
- ▶ Compressor and Vacuum Pump for Pneumatic and Vacuum Test
- ▶ Digital thickness gauge for measuring thickness after formation of dish and other components
- ▶ Infrared Temperature Sensing Gun
- ▶ Tachometer — measuring the rotation of Agitator and Centrifuge Basket
- ▶ Dark room for X-Ray film check



Team Strength

We have expanded our shop floor fabrication team strength and increased to 200+ persons. We now have 12 independent fabrication teams having expertise on manufacturing equipment.



Certificates



ASME U Stamp

The ASME U Stamp is an indication of quality for pressure vessels. It ensures that the design, fabrication, inspection, and testing of pressure vessels conform to ASME's guidelines. ASME U stamp is provided on the body or the nameplates of the pressure vessels as a certification to meet ASME requirements. Globally, more than 100 countries use the ASME BPVC code for the pressure vessel design and U stamped vessels follow the requirements of ASME Sec VIII Div 1. For the maximum protection of life and property, ASME provides rigorous rules for pressure vessels. In many countries, the government authority made it mandatory to purchase ASME U stamped vessels.



CE Certificate

The CE mark is required for all new products which are subject to one or more of the European product safety directives. It is a visible sign that the manufacturer of the product is declaring conformity with all the directives relating to that product.



Integrated Management System,

We also have ISO 9001:2015, 14001:2015 and 45001:2018 certifications



'R' Stamp

The National Board offers the Certificate of Authorization and R symbol stamp for the repair and/or alteration of boilers, pressure vessels, and other pressure-retaining items. Repair or alteration of pressure-containing parts of a container must be performed in compliance with the applicable provisions of the current edition of the National Board Inspection Code (NBIC). Where specific procedures are not given, it is intended that subject to acceptance of the inspector, all repairs or alterations must conform as much as possible to the American Society of Mechanical Engineers (ASME) Boiler and Pressure Vessel Code (BPVC) section and edition to which the container was constructed.



BELIEFS THAT

DRIVE US

OUR MISSION

To keep rising as a force to be reckoned with, for its exceptional services and outperforming equipment that facilitate our clients to maximize results with ease and swiftness, propel them towards accelerated growth, so that they become success stories in their respective industries.

OUR VISION

To transcend from being a reliable equipment manufacturer to an acclaimed turnkey solution provider, worldwide.



OUR ADVANTAGES



- ▶ 44 years of experience.
- ▶ 250+ happy customers base all over India and Overseas Clients.
- ▶ Client base across 5 continents.
- ▶ Equipped with cutting edge technology & advanced manufacturing set-up.
- ▶ Meticulous quality control from design-procurement to delivery equipment, manufactured as per ASME, TEMA, DIN
- ▶ IS standards and cGMP equipment in compliance with USFDA, UKMCA and TGA.
- ▶ Seasoned team, stalwarts in their domain knowledge.
- ▶ Round the clock after sales support.
- ▶ A brand name synonymous with reliability.

OUR VALUES

To ensure eternal client success

For us, success means the success of our clients, and the fact that majority of our clients are continually expanding, is a hallmark of the same.

To build and maintain relationships

Our clients have us on the absolute top of their preferred vendor list for the faith they have on performance of our equipment, timelines and reliability.

To be forerunners in innovation

At Stalwart, we keep inventing and reinventing designs and manufacturing practices. Having adopted Kaizen, we constantly push ourselves to challenge the status-quo.

To be a great place to work

Our work culture makes the place exuberant and this heightens the quality and speed of responsiveness and interactions.

To remain an ethically strong organization

We strive to maintain and elevate integrity, transparency, be socially responsible and be globally considerate. We believe that our reputation further encourages our clients' commitment towards the brand.

OUR PRODUCTS



1. Centrifuge
2. Sparkler Filter/ Filter Press
3. Vacuum Tray Dryer
4. Air Tray Dryer
5. Octagonal Blender
6. Reactor
7. Fluid Bed Dryer

4
DECADES

of equipment
manufacturing



8. Multi-mill
9. Vibro-sifter
10. Colloid Mill
11. Cream Ointment Manufacturing Plant
12. Liquid/Syrup Manufacturing Plant
13. Inline Homogenizer
14. Ribbon Blender
15. Rapid Mixer Granulator (RMG)
16. Cad / Comminuting Mill
17. Rotocone Vacuum Dryer (RCVD)
18. Planetary Mixer (PLM)
19. Pressure Nutsche Filter



1.



• Centrifuge

Centrifuge is used for separating liquid from slurry.

• Types:

1. Manual Top Discharge (MTD)
2. Instant Top Discharge (ITD)
3. Bottom Discharge (BD)

• Standard Sizes:

12", 24", 36", 48" & 60"

2.

• Sparkler Filter/ Filter Press

Sparkler filter / Zero Hold up filter press uses customised filter media and interlocking cups ensure efficient separation of impurities.

• Types/Models:

6", 8", 14", 18", 24" & 33"



3.

Vacuum Tray Dryer

Vacuum Tray Dryer is used for drying heat-sensitive materials in a vacuumized insulated chamber that is equipped with multiple trays placed on hot plate. It reduces drying time & ensures uniform drying of products.

Standard Models:

2, 4, 6, 12, 24, 36, 48 and 96 trays



5.



4.

Air Tray Dryer

Air Tray Dryer is conventional drying equipment used for drying materials in a insulated chamber equipped with multiple trays by circulating hot air. It ensures uniform drying of a wide range of products.

Standard Models:

6, 12, 24, 36, 48, 96 & 192 trays



Octagonal Blender

Octagonal Blender is used for mixing of dry granules and powder. Its unique octagonal shape and internal baffles ensures uniform mixing of materials, making it an indispensable tool for pharmaceutical, food and chemical industries.

Capacities:

100 Ltrs to 5 KL



6.

Reactor

Reactor facilitates chemical processes like extraction, distillation, evaporation, crystallization, mixing, fermentation, ethoxylation, polymerization, esterification, chlorination, nitration, hydrogenation.

Conditions:

Working pressure ranging from vacuum upto 25 bar and temperatures from sub-zero upto 350°C.

Capacities

100 L to 65 KL



8.

Fluid Bed Dryer

A Fluid Bed Dryer uses fluidization technique for uniform drying of moist material. The complete FBD setup has HEPA filters and Electrical Heater / Steam Radiator to heat atmospheric air that passes through fluidization chamber. FBD has auto bag-shaking arrangement to avoid chocking of the dry powder on finger bags.

Capacities:

5 Kg to 500 Kg

7.

Multi-mill

Multimill is used for high-speed granulation, shredding and chopping of dry materials using customised Beater assembly and Scrapper blades to achieve the desired particle size.

Types/Models:

1 HP, 3 HP & 5 HP and customised as per special requirement

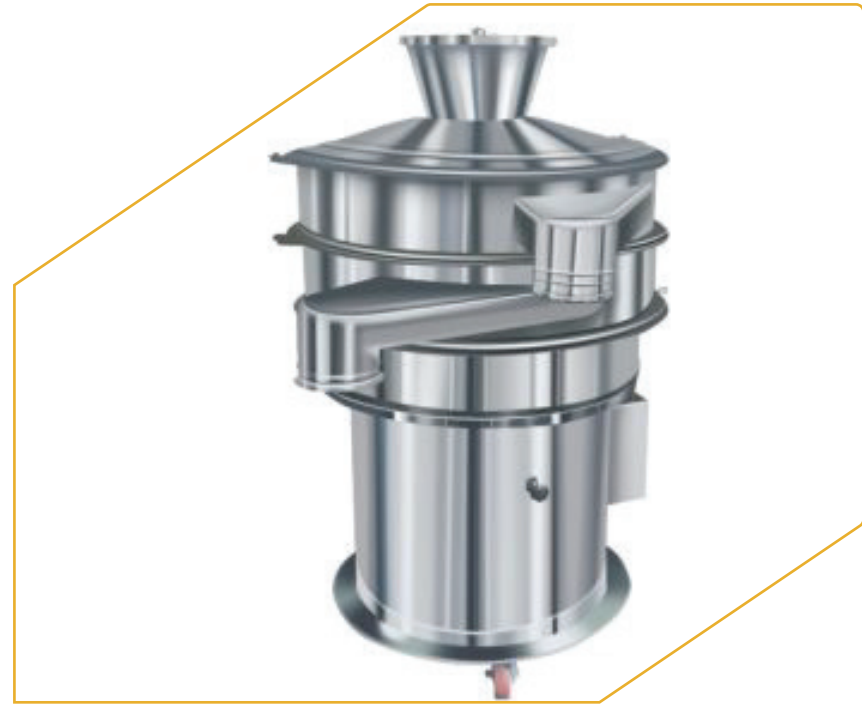


9.

• Vibro-sifter

It has a vibrating screen that efficiently separates product particles by their size.

- **Capacities/ Size:**
12", 18", 24", 30", 36", 48" & 60"



11.



• Cream Ointment Manufacturing Plant

Cream ointment manufacturing plant is a fully automated plant with special design Anchor stirrer, High Shear Inline Homogenizer, Lobe pump and Vessels designed with CIP & SIP.

10.

• Colloid Mill

Colloid mill a versatile machine used for grinding, homogenizing, emulsifying, dispersing, mixing and extracting. Typical application is homogenizing and milling particles upto 5 -10 microns.

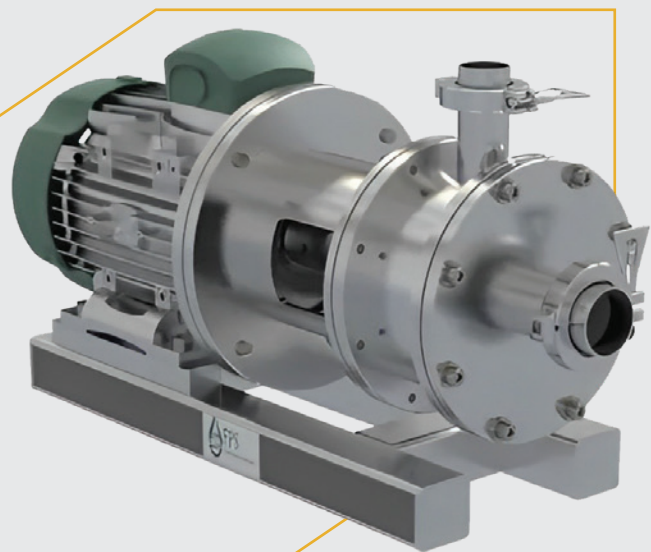




12.

Liquid / Syrup Manufacturing Plant

Liquid/Syrup manufacturing plant are primarily used for production of oral liquids. The plant consists of vessels, pre-filter, vacuum system, zero holdup filtration unit, inline homogenizer, transfer pump, connecting pipelines and control panel.



13. Inline Homogenizer

Inline Homogenizer houses High Speed Rotor and Stator. The design of the Rotor and Stator system has high pumping efficiency.

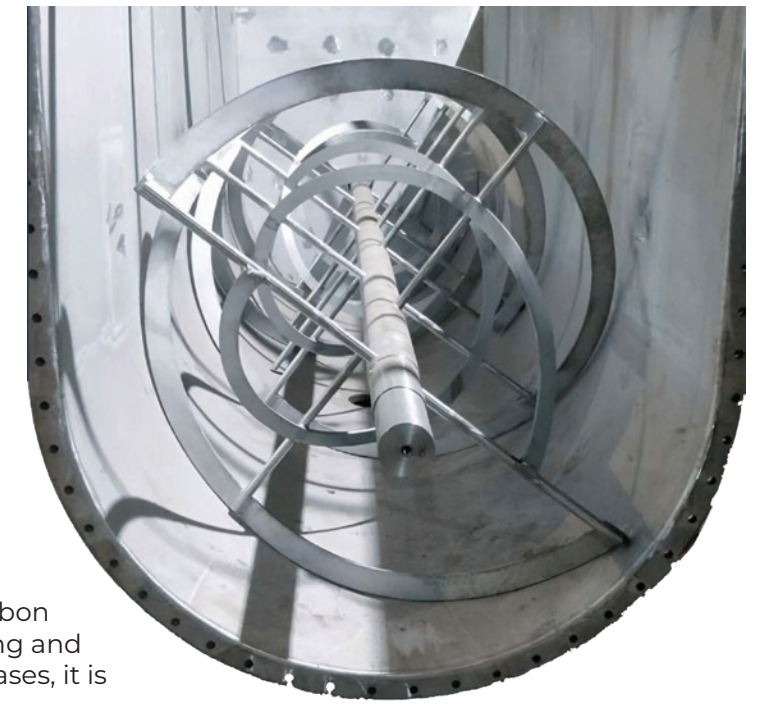
Capacities:
5 HP to 100 HP

14.

Ribbon Blender

Ribbon Blender is used for mixing dry powder/ granuals. It has double-helical ribbon type agitator which ensures uniform mixing and complete discharge of product. In some cases, it is also used for moisture removal.

Capacities:
250 L to 10 KL

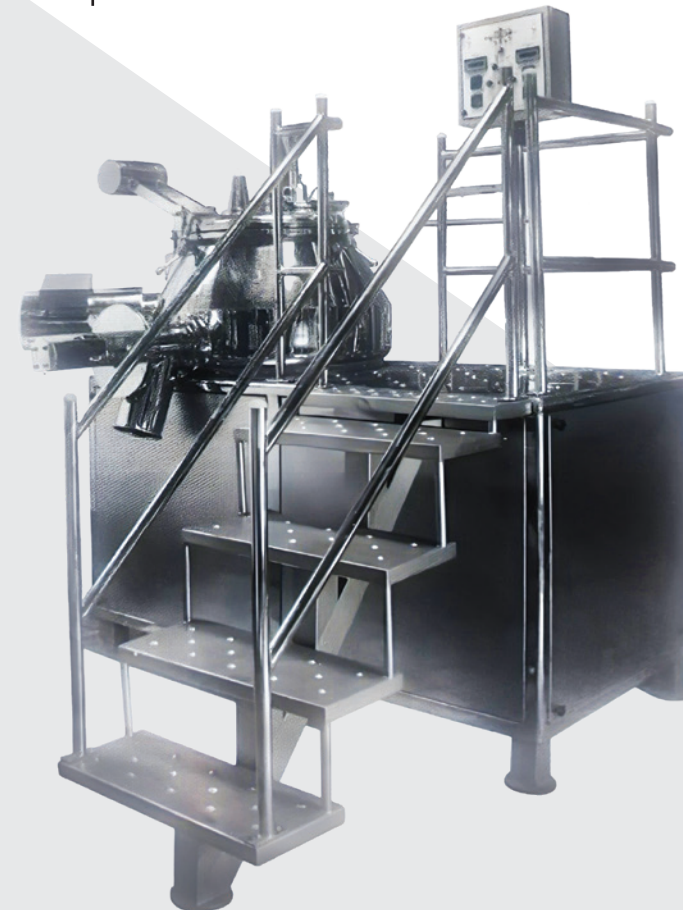


15.

Rapid Mixer Granulator

In Rapid Mixer Granulators, granulation formation occurs by rising, whirling & tumbling motion of the material. Rapid Mixer Granulators are used to mix pharmaceutical ingredients and make granules before compression.

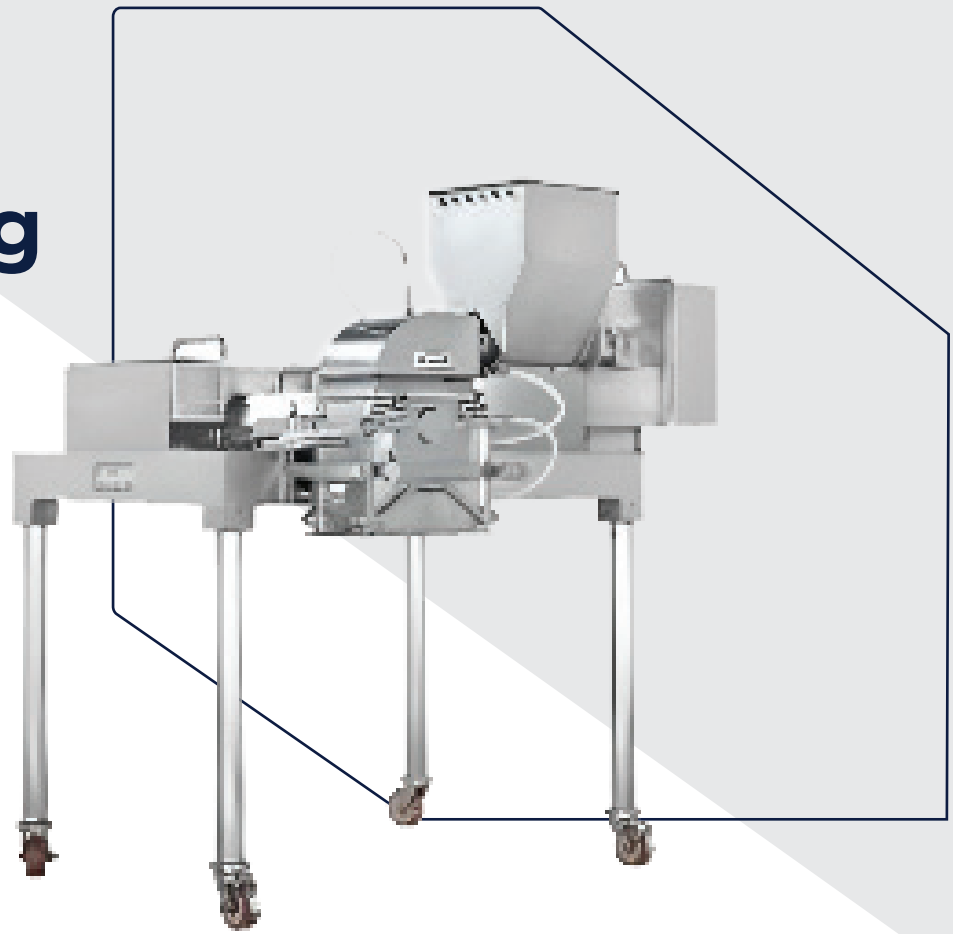
Capacities:
25 L to 1 KL



16.

Cad / Comminuting Mill

Cad / Comminuting mill is used for the downsizing, milling, pulverization and dispersion of wet and dry products.



18.

Planetary Mixer

Planetary Mixer is used for mixing of wet / dry materials. The planetary motion of the beater enables faster and homogeneous mixing of materials.

17.

Roto-cone Vacuum Dryer

Rotocone Vacuum Dryer is suitable for drying of temperature sensitive material, which are easily oxidized, volatile, highly irritant and poisonous in nature. RCVD runs under vacuum and is steam jacketed with insulation.



19.

Pressure Nutsche Filter

Pressure Nutsche Filter is a closed pressure vessel designed to separate solid and liquid by filtration under pressure and/or vacuum.

Capacities:
25 L to 1 KL



CATERED INDUSTRIES



CLIENTS

Our client base is spread worldwide with successful plant installations in USA, Germany, Egypt, Turkey, Ethiopia, Saudi Arabia, Iran, UAE, India, Bangladesh, Indonesia and Thailand.



BAJAJ HEALTHCARE LIMITED



Harman Finochem Ltd.



PHARMACEUTICAL INDUSTRY



STALWART INTERNATIONAL BELIEVES SAFETY FIRST.

Safety in heavy engineering industries is paramount; involving hazard identification, risk assessments and implementation of preventive measures. Ensuring proper personal protective equipment usage, regular equipment maintenance and comprehensive training programs fosters a safe work environment, reducing accidents and enhancing productivity.

WE PROMISE TO CARE

We maintain quality assurance programs and comprehensive systems which assures full traceability of all components through all the stages of design, procurement, fabrication, machining, assembling, finishing, logistics, installation and final commissioning.

STALWART INTERNATIONAL is committed to provide quality finished equipment, that empowers our clients with the confidence to always work with us and further enabling them to serve their clients much better. We function with a holistic approach and understand that we are an integral part of a vast ecosystem.



NOTES

